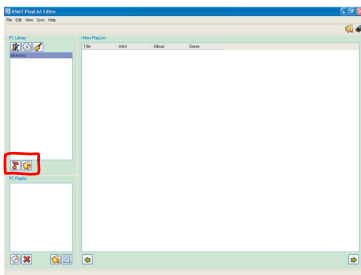


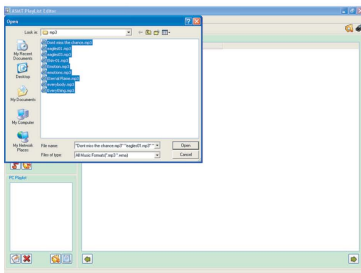


## Playlist Editor User's Guide

1. Find this software in the driver CD and open it. Click <Add Songs> or <Add Folders> in the bottom of "PC Library" window to input MP3 files or folder.

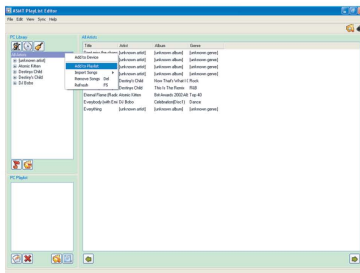


2. Select the MP3s you want to upload in the Open window and press <Open> button.

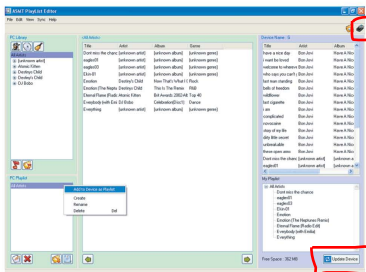




3. Select and right click <All Artists>, click <Add to Playlist> to add those MP3s to the list (the PC Playlist window).



4. Select and right click <All Artists> in "PC Playlist" window, click <Add to Device as Playlist> to upload the MP3s and play list to the SharePlayer (The SharePlayer has to be connected to the computer). Please click <Device Viewer> in the up-right corner of the main window to open two more sub-windows in which you will see the play list that will be uploaded. Press <Update Device> button in the bottom of <My Playlist> window to start uploading.





# FlashPoint MP3 SharePlayer User's Manual

5. A "Sync OK" window will pop up after uploading is done; please click <OK> to complete.

